

Directions to the Family Justice Center

Driving

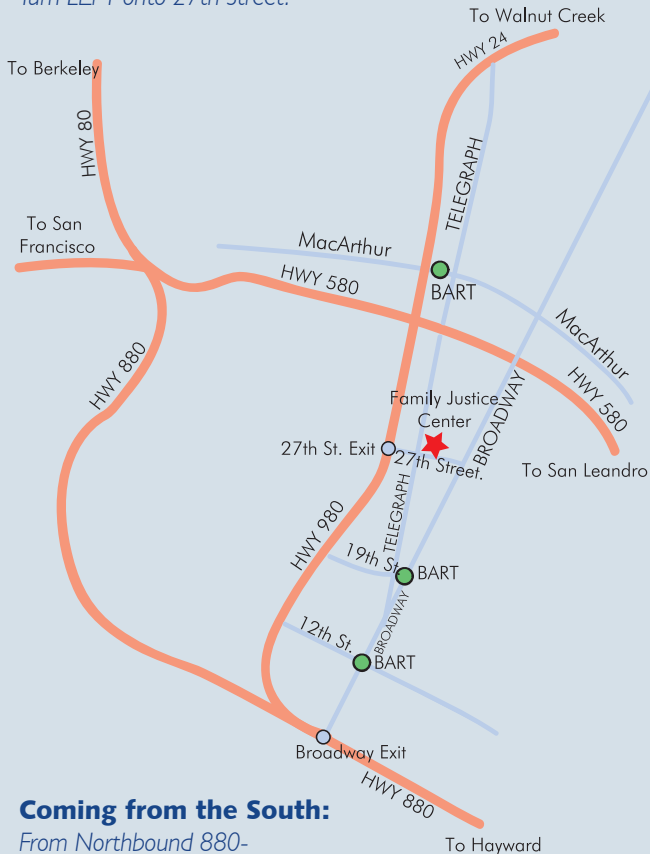
Coming from the North or East:

From Hwy 580 -

Take the I-980 exit toward I-880/Downtown Oakland

Take the 27th Street exit towards West Grand Ave.

Turn LEFT onto 27th Street.



Coming from the South:

From Northbound 880-

Take the Broadway exit to Downtown

Bear right onto the ramp to Alameda

Bear right at Broadway

Bear left at Telegraph Ave., to approx. 8 miles

Turn RIGHT at 27th Street

BART

12th St., 19th St., or MacArthur Stations

AC Transit

Bus # 1, 1R along Telegraph Ave.

Bus #51, 59 along Broadway

All buses stop at the 12th st. BART station



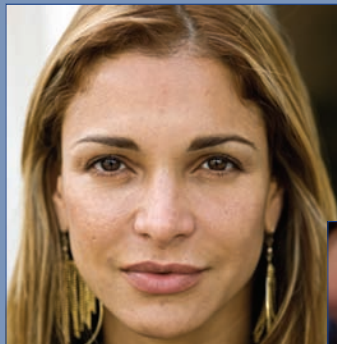
Alameda County Family Justice Center
470 27th Street
Oakland, CA 94612

510-267-8800
www.acfjc.org

Monday-Friday
8:30am - 5:00pm

No appointment necessary

For a full list of 24-hour crisis numbers, call the ACFJC
(510-267-8800) or visit www.acfjc.org.



*"Coming here is
like a breath of
fresh air."*



ACFJC provides a safe, confidential environment for victims of all ages who have experienced physical, sexual, and/or psychological abuse. Consider us your gateway to over 100 resources and 40 on-site partners—**prosecutors, law enforcement, counselors, medical providers, lawyers, child advocates, and support groups**—all under one roof.

Taproot
FOUNDATION

This brochure made possible by the Taproot Foundation.

Alameda County Family Justice Center

Millions of Americans are affected by abuse.
You're not alone. We can help.



*A safe haven for victims
of domestic violence, sexual
assault and exploitation,
child and elder abuse*



We Serve All Victims of Abuse

We offer services to victims of any age or gender—children, teens, adults, seniors—who have been threatened with physical, sexual, or emotional violence or other kinds of abusive, controlling behavior by someone in their lives.

The signs:

- Physical harm
- Threats of physical harm
- Intimidation
- Deprivation of food, sleep, money
- Forced sexual contact
- Verbal threats and abuse
- Restraining someone from leaving
- Emotional abuse



"I feel so validated when I talk to you, thank you for listening."

We Can Help – All Under One Roof

At the ACFJC, you don't have to travel to multiple locations to get the help you need. Visit us and meet with our Navigators, who will explain your rights, options, and the range of services available to you. They can help guide you through the many agencies that can help. We won't leave you until you're ready to leave us – on the road to a safe and healthy home.

*If you feel you may be in an abusive situation, we can help you access the following **at no cost**:*

- Prosecution of the offender
- Restraining and protective orders
- Legal assistance
- Counseling for you and/or your child
- On-site childcare
- Emergency shelter and housing
- Emergency food and clothing
- Job training and computer training
- Relocation money
- Accessing public health benefits
- Immigration assistance
- Transportation



"I look forward to being one of your success stories."

We Offer More Than Just Hope

We offer results too. Since we opened our doors in 2005, we have helped thousands of Alameda County victims find justice and security in their lives. Together with our many hardworking partners, we:

- **Provide services** to more than 10,000 people a year
- **Bring people together** to significantly reduce domestic violence homicides
- **Connect** law enforcement with advocates and lawyers to better serve victims
- **Coordinate** the service providers to help victims get services easier
- Provide important **oversight** to ensure victims are receiving services that help them through individualized planning

Who Is Eligible?

Women, children, men, adolescents, and their family members are eligible for our services.

Abusers are not welcome here. *This is a **SAFE** zone.*

We speak multiple languages. We have video relay services and videophones available for the deaf or hearing impaired.

"I'm so grateful you check on me..."

